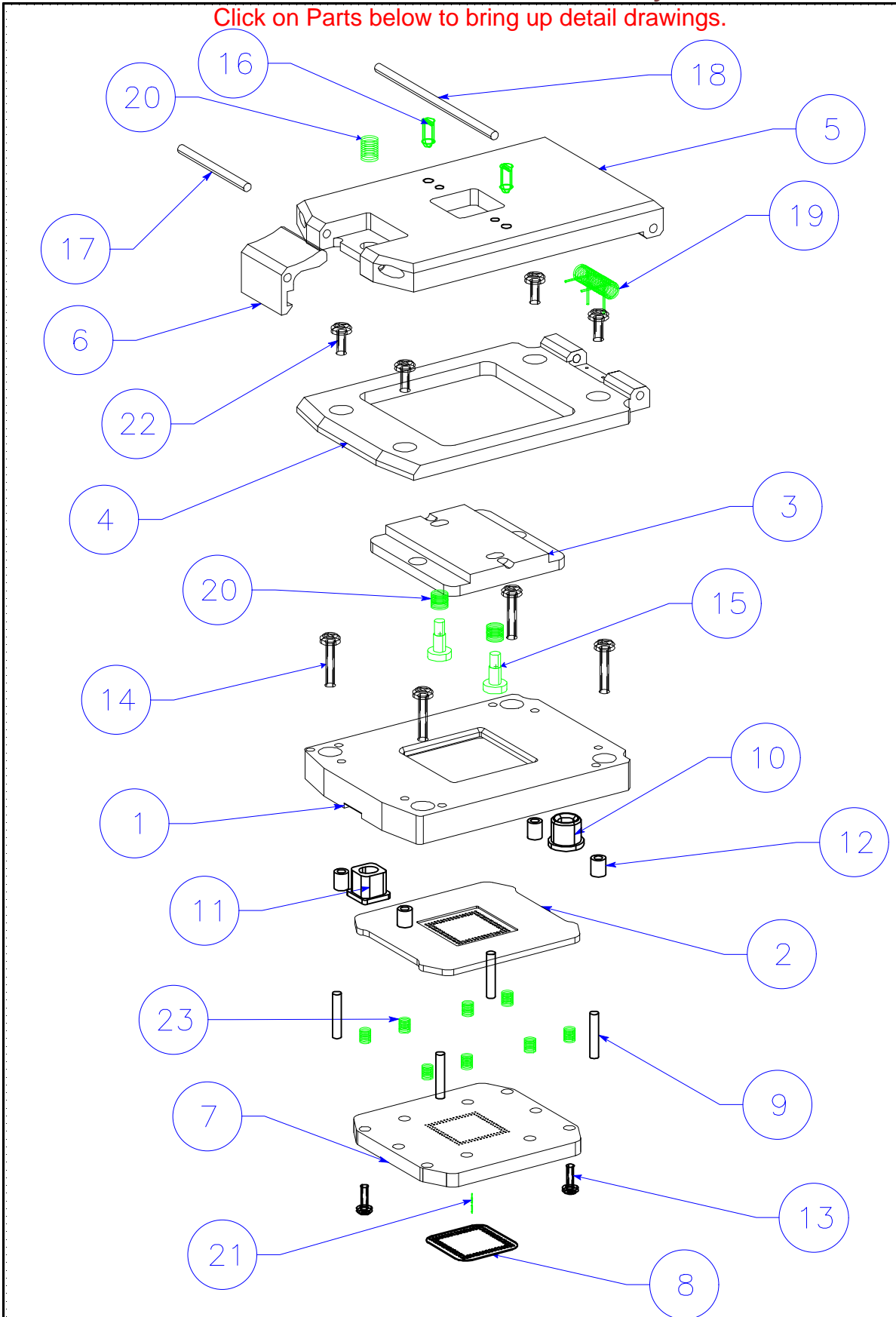


# General AQL Socket Assy

Click on Parts below to bring up detail drawings.



Click on Parts to bring up detail drawings.


Click on Parts to bring up detail drawings.

PROPRIETARY INFORMATION. NO REPRODUCTION OR OTHER USE OF THIS DOCUMENT IS PERMITTED WITHOUT THE WRITTEN PERMISSION OF AQL.  NOTES:	DRAWINGS ARE NOT TO SCALE. DIMENSIONS ARE IN INCHES. TOLERANCES ARE NON ACCUMULATIVE.  TOLERANCES X.XX ± .010 X.XXX ± .005 X.XXXX ± .0025 ANGLES ± 2°	APPROVALS			<b>AQL MANUFACTURING SERVICES</b> 9755 S.W. COMMERCE CIRCLE WILSONVILLE OREGON, 97070 TELEPHONE (503) 682-3195
		DATE	ORG LARRY R RICE	DATE 03APR98	
		ENG			DRAWING NO. XXXXXXXX-0BXX-XXXX-XXX-XXXX-0-xx00
		PROG			CUSTOMER
		SHOP			CONTACT
		QUAL			DYN PER ASSEMBLY
		PROD			FILE LOCATION
		FINAL			XXXXX: STDASSY
		APPR			

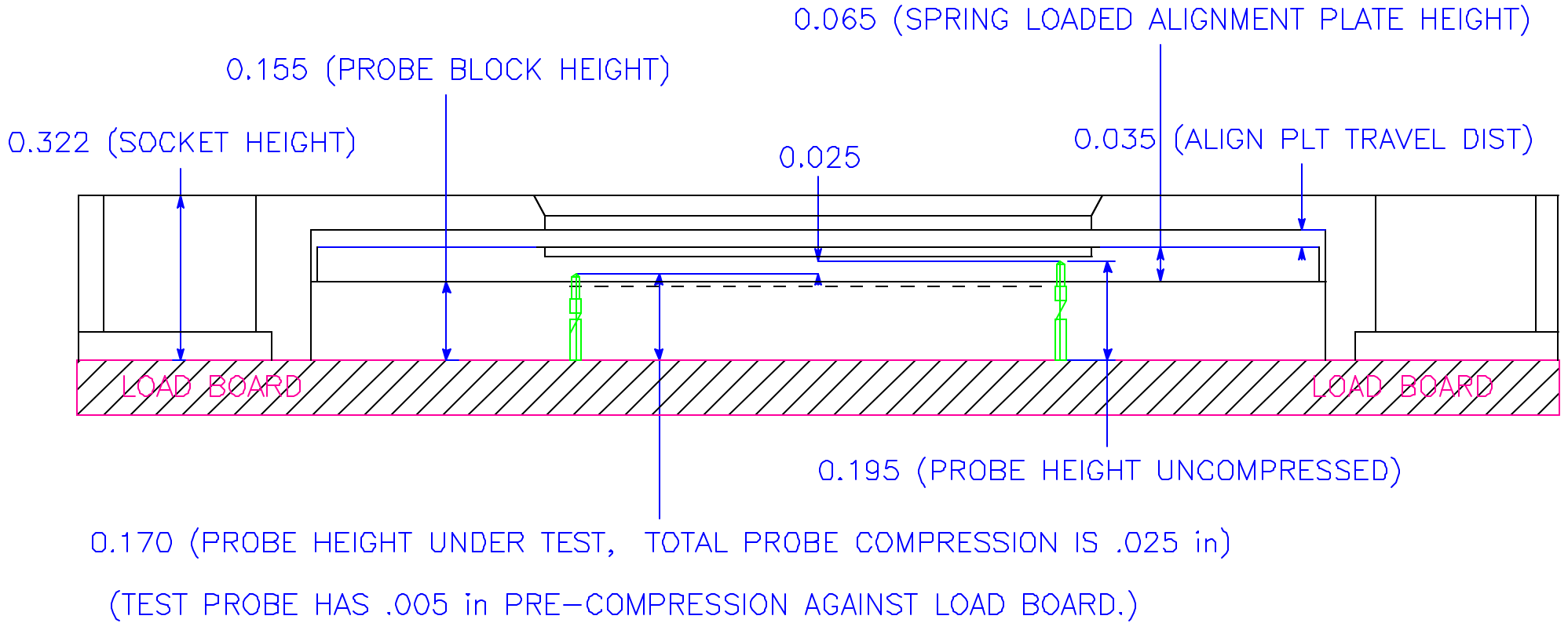
# General AQL Parts list

23	LC014A-1 SS	8.0000	LEE
22	PH4-40X.25	4.0000	4-40X.25
21	M-030-B02-015-010-215C	XXX.0000	
20	LC014B-1 SS	3.0000	LEE
19	LTR-023D-3 SS	2.0000	LEE
18	.0938 DIA X 2.2" PIN	1.0000	DRILL BLANK
17	.0938 DIA X 1.25" PIN	1.0000	DRILL BLANK
16	91385a107	2.0000	MMCAR (6-32X.25 HEADLESS SCREW)
15	PL-1-3 (MODIFIED)	2.0000	
14	PH 4-40 X .5"	4.0000	SHIP WITH SOCKET
13	PH 2-56 SCREW	2.0000	
12	92394A112 (4-40 SS DIAMOND KNURLED PRESS INSERTS)	4.0000	4-40 SS DIAMOND KNURLED PRESS INSERTS
11	SLOTTED BUSHING	1.0000	
10	ROUND BUSHING	1.0000	
9	.0938 DIA X .5" LENGTH	4.0000	DOWEL PIN
7	PROBE PLATE	1.0000	
6	LATCH	1.0000	LATCH
5	LID	1.0000	LID
4	HINGE	1.0000	HINGE
3	PUSHER	1.0000	
2	EGG CRATE	1.0000	
1	SOCKET BODY	1.0000	
Item	PartID	Quantity	Name


PROPRIETARY INFORMATION NO REPRODUCTION OR OTHER USE OF THIS DOCUMENT WITHOUT THE WRITTEN PERMISSION OF AQL MANUFACTURING IS PERMITTED.

<p>PROPRIETARY INFORMATION. NO REPRODUCTION OR OTHER USE OF THIS DOCUMENT IS PERMITTED WITHOUT THE WRITTEN PERMISSION OF AQL.</p> <p>NOTES:</p>	<p>DRAWINGS ARE NOT TO SCALE. DIMENSIONS ARE IN INCHES TOLERANCES ARE NON ACCUMULATIVE</p> <p>TOLERANCES</p> <p>X.XX ± .010 X.XXX ± .005 X.XXXX ± .0025 ANGLES ± 2°</p>	<p>APPROVALS</p>		
		<p>DATE</p>		
		ORIG	LARRY R RICE	03APR98
		ENG		
		SHOP		
		QUAL		
		PROD		
		FINAL		
		APPR		
	<p>MATERIAL</p> <p>N/A</p> <p>FINISH</p>	 <p>9755 S.W. COMMERCE CIRCLE WILSONVILLE OREGON, 97070 TELEPHONE (503) 682-3193</p>		
		<p>TITLE</p> <p>STANDARD PARTS LIST DWG</p>		
		<p>DRAWING NO.</p> <p>XXXXXXXX-08XX-xxxx-xxx-xxxx-0-xx00</p>		
		<p>CUSTOMER</p>		<p>REV</p> <p>A</p>
		<p>CONTACT</p>		
		<p>QTY ASSY</p> <p>N/A</p>	<p>FILE</p> <p>XXXXX: STDASSY</p>	

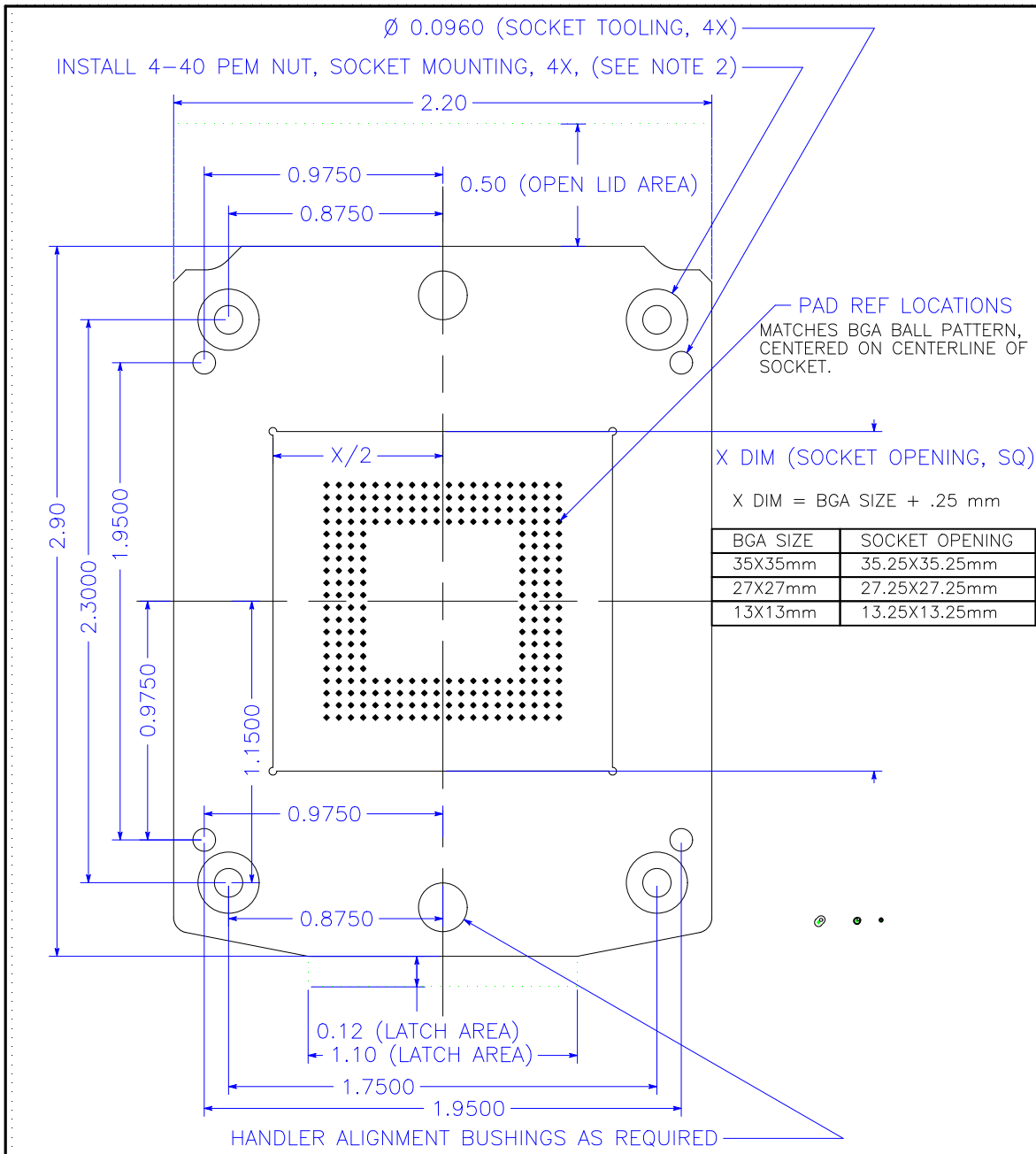
# Standard uAQL Socket Z-axis info



SIDE VIEW

PROPRIETARY INFORMATION NO REPRODUCTION OR OTHER USE OF THIS DOCUMENT IS PERMITTED WITHOUT THE WRITTEN PERMISSION OF AQL.	DRAWINGS ARE NOT TO SCALE. DIMENSIONS ARE IN INCHES. TOLERANCES ARE NDN ACCUMULATIVE.  TOLERANCES X XX ± .010 X XXX ± .005 X XXXX ± .0025 ANGLES ± 2°	APPROVALS		 9755 S.W. COMMERCE CIRCLE WILSONVILLE OREGON, 97070 TELEPHONE (503) 682-3193
		DATE		
NOTES:	MATERIAL	ORIG	LARRY R RICE	21AUG98
	FINISH	ENG		
		PROG		
		SHOP		
		QUAL		
		PROD		
		FINAL		
		CUSTOMER		CONTACT
		QNT PER ASSEMBLY		FILE LOCATION

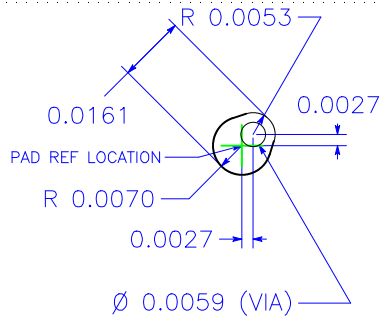
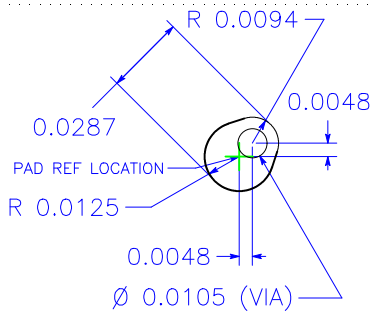
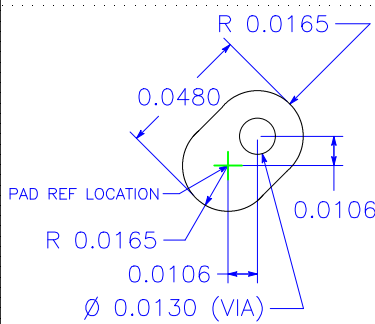
# General AQL Socket Footprint (X8XX)



1.27 mm PITCH: LOAD BOARD PAD

0.80 and 0.65 mm PITCH: LOAD BOARD PAD

0.50 mm PITCH: LOAD BOARD PAD



**NOTES:**

- 1) LOAD BOARD PLATING; SEE JTI LOAD BOARD PLATING SPEC LIT1009
  - 2) THREADED INSERT TO BE SUPPLIED BY LOAD BOARD MANUFACTURER
  - 3) NICKEL AND GOLD PLATING GENERAL SURFACING REQ. MUST MEET ANSI/IPC-A-600E, SECTION 2.7.1.
  - 4) NICKEL PLATING MINIMUM PLATING THICKNESS OF 200 µINCH/5µm THICK.
  - 5) NICKEL PLATING MUST MEET QQ-N-290A, CLASS1, GRADE G.
  - 6) GOLD PLATING MUST MEET ML-G-45204C, TYPE I (99.7% GOLD MIN), GRADE C (HARDNESS 130-200).
- CLASS 1 (50 µinch/1.3 µm THICK, MINIMUM)

PROPRIETARY INFORMATION. NO REPRODUCTION OR OTHER USE OF THIS DOCUMENT IS PERMITTED WITHOUT THE WRITTEN PERMISSION OF AQL.

DRAWINGS ARE NOT TO SCALE. DIMENSIONS ARE IN INCHES. TOLERANCES ARE NON ACCUMULATIVE.

**TOLERANCES**

X.XX ± .010  
 X.XXX ± .005  
 X.XXXX ± .0025  
 ANGLES ± 2°

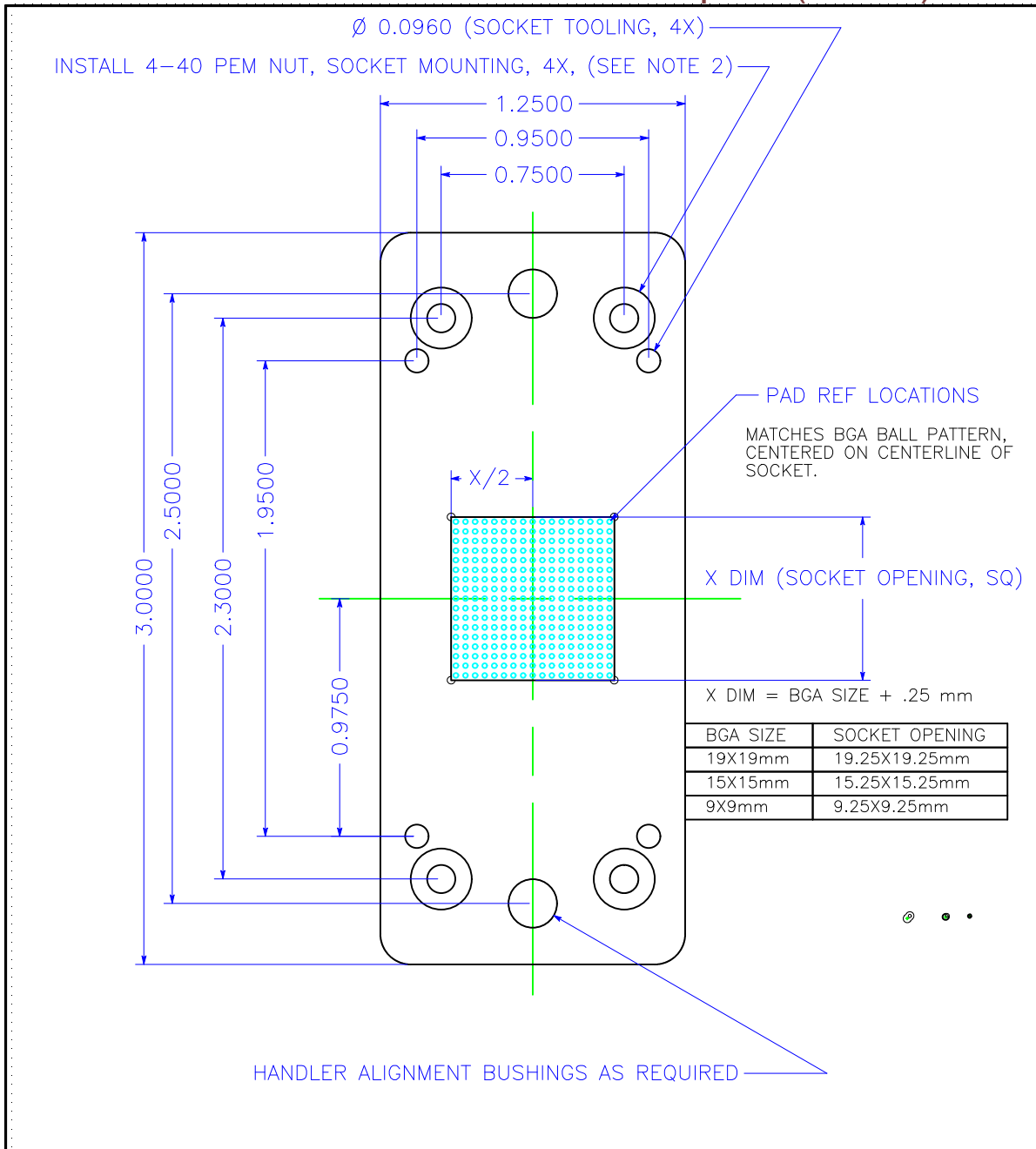


TITLE: GENERAL STD AQL SOCKET/LOADBOARD LAYOUT

APPROVALS		DATE
ORIG	LARRY R RICE	12MAY98
FINAL		

CUSTOMER	CONTACT
BY PER ASSEMBLY	FILE LOCATION: GENAQL_FP

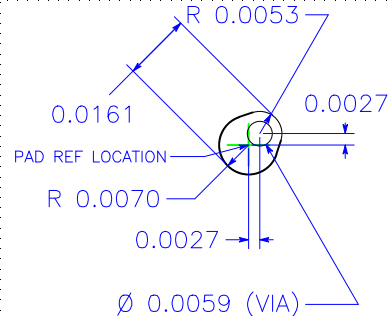
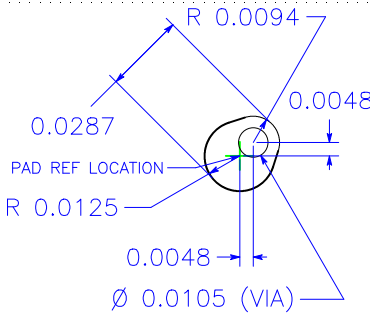
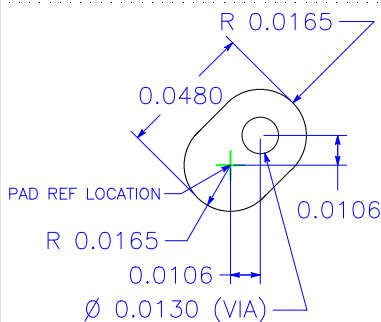
# General AQL Thin Socket Footprint (XCXX)



1.27 mm PITCH: LOAD BOARD PAD

1.0, 0.80 and 0.65 mm PITCH:  
LOAD BOARD PAD

0.50 mm PITCH: LOAD BOARD PAD



NOTES:

- LOAD BOARD PLATING: SEE JTI LOAD BOARD PLATING SPEC LIT1009
- THREADED INSERT TO BE SUPPLIED BY LOAD BOARD MANUFACTURER
- NICKEL AND GOLD PLATING GENERAL SURFACING REQ. MUST MEET ANSI/IPC-A-600E, SECTION 2.7.1.
- NICKEL PLATING MINIMUM PLATING THICKNESS OF 200 µINCH/5µm THICK.
- NICKEL PLATING MUST MEET QQ-N-290A, CLASS1, GRADE G.
- GOLD PLATING MUST MEET MIL-G-45204C, TYPE I (99.7% GOLD MIN), GRADE C (HARDNESS 130-200), CLASS 1 (50 µinch/1.3 µm THICK, MINIMUM).

PROPRIETARY INFORMATION. NO REPRODUCTION OR OTHER USE OF THIS DOCUMENT IS PERMITTED WITHOUT THE WRITTEN PERMISSION OF AQL.

DRAWINGS ARE NOT TO SCALE.  
DIMENSIONS ARE IN INCHES  
TOLERANCES ARE NON ACCUMULATIVE

TOLERANCES

X.XX ± .010  
X.XXX ± .005  
X.XXXX ± .0025  
ANGLES ± 2°

APPROVALS

ORIG	DATE
LARRY R RICE	12MAY98
FINAL	



9735 S.W. COMMERCIAL CIRCLE WILSONVILLE OREGON, 97170  
TELEPHONE (503) 682-3193

TITLE  
GENERAL AQL-C SOCKET/LOADBOARD LAYOUT

DRAWING NO. REV

CUSTOMER	CONTACT
011 PEM ASSEMBLY	GENAQL-C_FP